

# Attention Parents!

Your child may soon receive a *NEW* card in the mail for *Round 3 P-EBT*. Look for it soon.

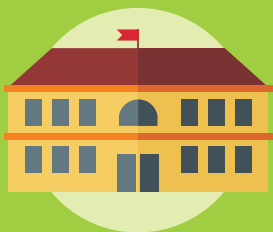


## What Is P-EBT?



Pandemic EBT provides financial assistance to replace school meals that were missed *beginning in October 2020* due to school closures, virtual learning, or hybrid school schedules. P-EBT can be used to buy food for your children at retailers that accept EBT cards.

## Why Am I Getting It?



The Tennessee Department of Human Services worked with your school to identify qualifying families and provide them with P-EBT cards. Your family may qualify if your child(ren) receives meals through the National School Lunch Program or attends a Community Eligibility Provision school.

## How Is This Card different Than My Old One?



Unlike prior P-EBT rounds, this card will be reloaded each month your child qualifies for P-EBT so hang on to it. If your child received P-EBT before, please discard any old cards after using up their benefits.

## Where Should I Go To Make Changes?



We've set up a convenient website for you to access now to make sure we have the right address to mail your card to. You can also make changes, see how much you'll be receiving, or decline to participate if you don't feel your family needs assistance. You can access it at <https://tdhs.service-now.com/relief>.